

Embrace: “Shifting Priorities by Addressing Wealth Inequities to Building Community Wealth”

6.21.2022

EMBRACE
Embracing Equity & Inclusion. Celebrating Differences.



EMBRACE WEBINAR SERIES

JUNE 21, 2022

**WEALTH MASTER 101:
SHIFTING PRIORITIES: ADDRESSING WEALTH
INEQUITIES TO BUILDING COMMUNITY
WEALTH**

TIME: 2-3 PM
LOCATION: VIRTUAL
COST: FREE

REGISTER AT WWW.GACITIES.COM



ASHAUNDA' DAVIS
WEALTH MANAGEMENT ADVISOR

Ashaundá M. Davis

Acknowledgements

EMBRACE

Embracing Equity & Inclusion. Celebrating Differences.



GA Municipal Association - which emboldens, educates, and nurtures employees, member cities, businesses, and community organizations to embrace differences and encourage belonging by fostering relationships to advocate community engagement, equity, and inclusion for the betterment of all.

Agenda

- Discuss areas for ECONOMIC empowerment, equity, and inclusion within Georgia.
- Review the economic State of Georgia
- Discuss implementing strategic solutions

Projects to Land Ownership



NEW FINANCIAL REPRESENTATIVE LEADERS

Southern Region



“What we need is not more Federal government, but better local government.”

Calvin Coolidge

“When local government addresses and shifts to building equity wealth, community wealth becomes INEVITABLE.”

Ashaundá Davis

CLIENT STORY & CHALLENGES



THE WEALTH DIVIDE

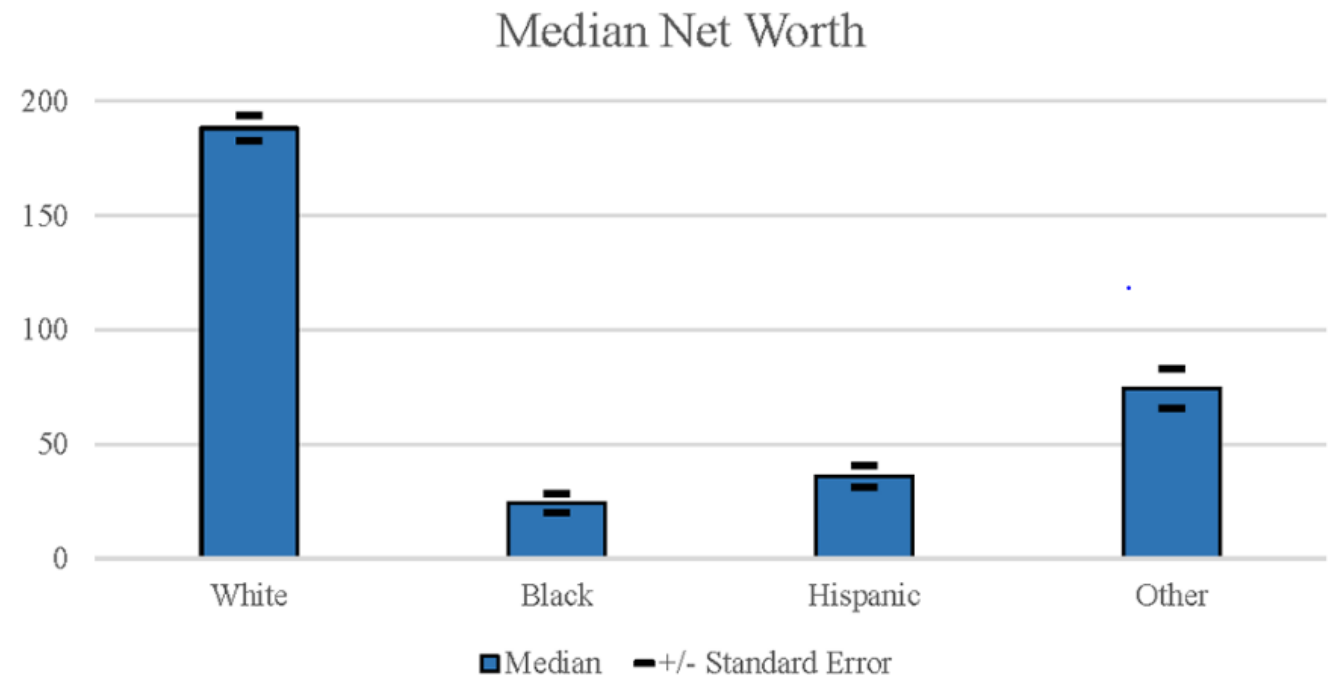
Georgia Stats and Income Average



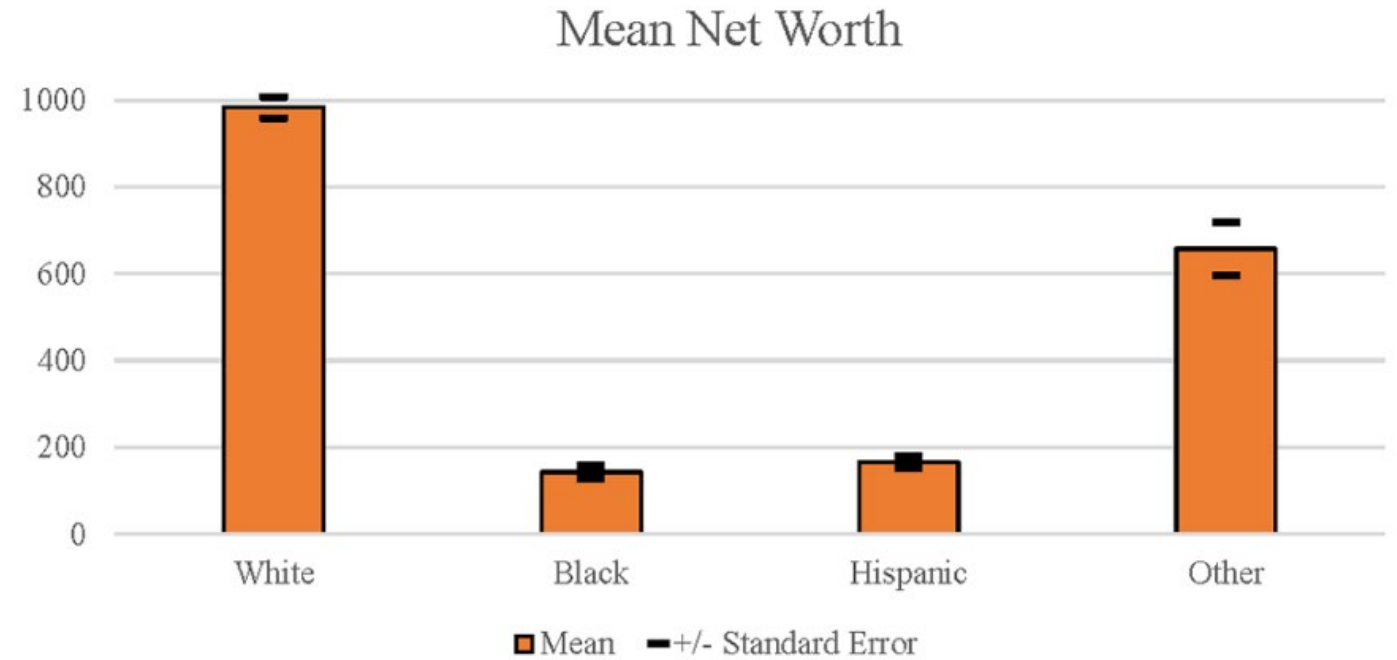
| Name | Total Census Households (HHs) | \$75k+ All (HHs) | \$75K+ White HHs | \$75K+ Black HHs |
|----------|-------------------------------|------------------|------------------|------------------|
| Fulton | 410,576 | 192,462 | 124,322 | 45,614 |
| Gwinnett | 293,330 | 139,440 | 81,848 | 35,295 |
| DeKalb | 282,436 | 118,443 | 62,539 | 45,140 |
| Cobb | 280,374 | 145,559 | 98,472 | 32,860 |
| Clayton | 94,279 | 24,748 | 4,240 | 17,573 |
| Sum | 1,360,995 | 620,652 | 371,421 | 176,482 |

Comparison – Median Net Worth

Figure 1. White families have more wealth than Black, Hispanic, and other or multiple race families in the 2019 SCF.



Comparison Mean Net Worth



Four Roadblocks to Community Wealth

- Trust
- Capital
- Leadership
- Accountability



WHAT'S THE SOLUTION?

Community Outreach



Community Outreach






Solutions

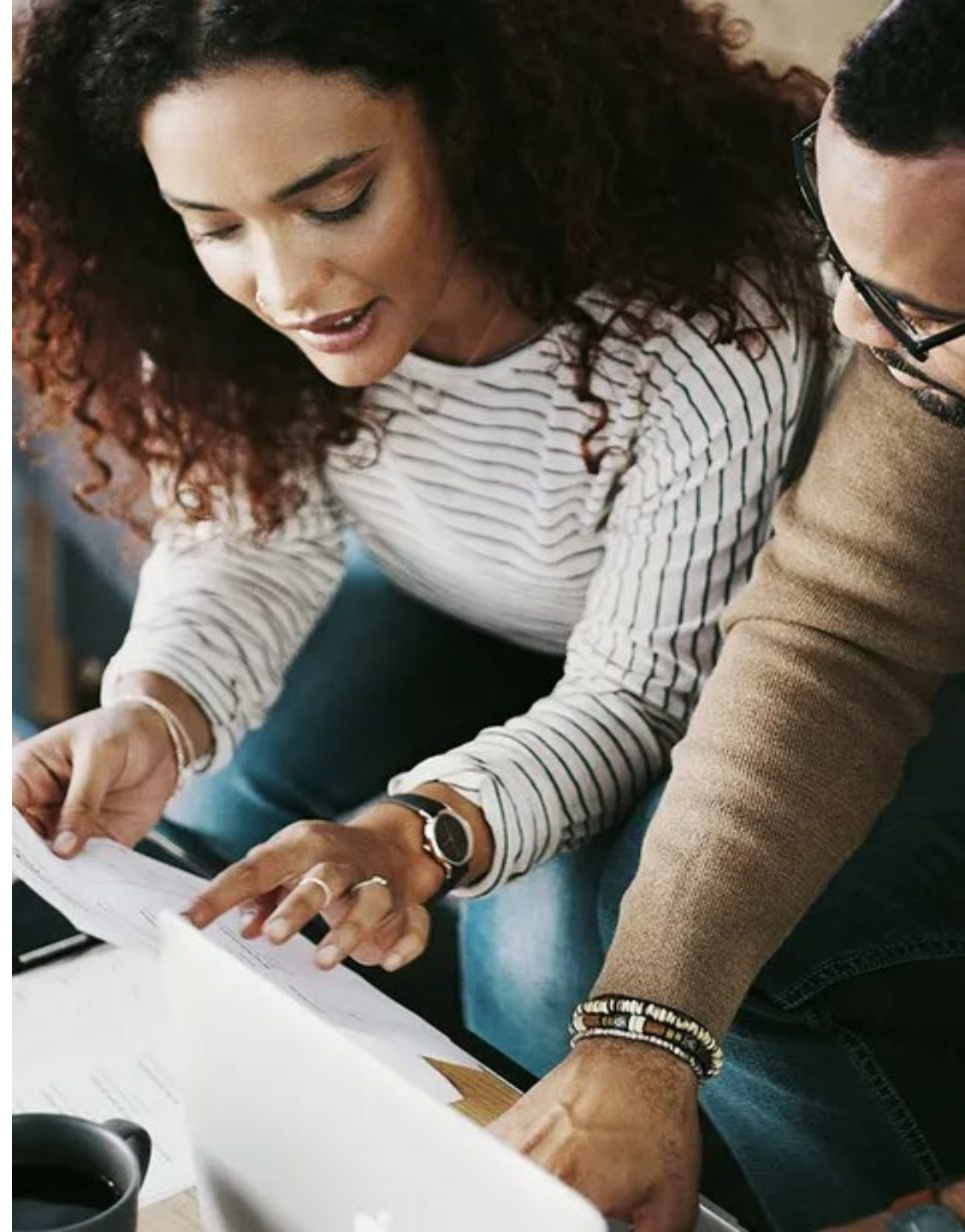
- Access/Acceptance/Accountability
- Consumer Education Workshops/Group Coaching/1:1 Advising Services


WEALTH
MASTERY
101



WEALTH MASTERY 101: *"Money with Michellé - Your Queen of Wealth"*
WEALTH BUILDING MADE EASY

| | | |
|--|---|--|
| <p>SAVE</p>  <ul style="list-style-type: none">• Emergency savings• Buying a home• Saving for wedding or life event <p>Go ></p> | <p>SPEND</p>  <ul style="list-style-type: none">• Budgeting• Credit and credit scores• Debt management <p>Go ></p> | <p>GROW</p>  <ul style="list-style-type: none">• Investment basics• College funding• Saving for retirement• Investment accounts <p>Go ></p> |
| <p>GIVE</p>  <ul style="list-style-type: none">• Giving to charities• Endowments• Deferred gifts <p>Go ></p> | <p>COMMUNITY OUTREACH</p>  <ul style="list-style-type: none">• Workshops and seminars• Tools for teachers• Tools for parents <p>Go ></p> | |



A man with a beard, wearing a dark suit, white shirt, and light blue tie, is sitting at a modern, light-colored table. He is looking down at a smartphone in his hands. The background shows a bright, modern interior with large windows and some greenery.

Financial Health Workshops
Spending Analysis & Forecast
Investment Education



FREE MASTERCLASS

Wealth Mastery 101

... How to THINK & GROW Wealth & Wealth Habits in 60 Days

BONUS: Register today and get my personal finance swipe file!

Ashaunda Davis

ARE YOU READY TO CREATE A LIFE OF WEALTH AND PROSPERITY IN LESS THAN 60 DAYS?

Get ready to... get EMPOWERED and grow wealth using my proven tools and strategies

My name is Ashaunda and I want to see you **LIVE** this **WEDNESDAY** at (time)
for my **SPECIAL TRAINING**

Recap

- Discussed the wealth gap and divide.
- Discussed areas for ECONOMIC empowerment, equity, and inclusion in Georgia.
- Reviewed implementing strategic solutions and partnerships.

Thank You & Contact us:

ashaundadavis@gmail.com | www.ashaundadavis.com | 502.354.8812



AshaundaDavis



OfficialAshaundaMDavis



Ashaunda Davis