

# **ATHENS-CLARKE COUNTY**

**CLIMATE RESILIENCY OPPORTUNITIES MAY 2021**



# ENERGY TRANSITION

- PLEDGE TO OBTAIN 100% OF ENERGY FOR THE GOVERNMENT AND COMMUNITY FROM CLEAN AND RENEWABLE SOURCES BY 2035
- COMMUNITY ADVISORY BOARD TO GUIDE AND MONITOR THIS WORK
- A COMMUNITY ENERGY FUND WILL DRAW FROM FRANCHISE FEES TO SUPPORT LOW INCOME NEIGHBORHOODS IN EFFICIENCY GAINS



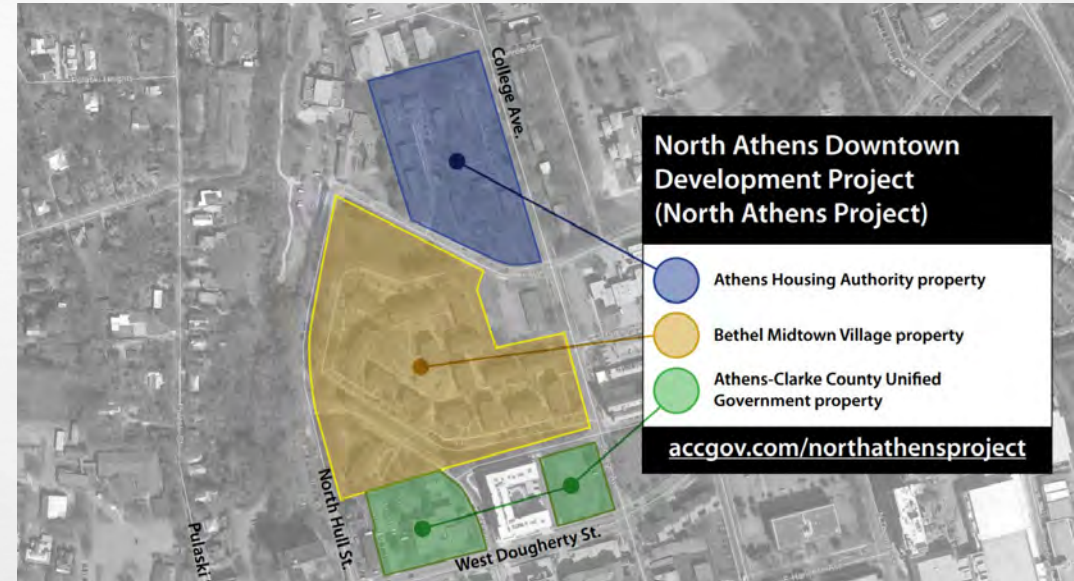
# COMMITMENT TO RENEWABLES

- SPLOST (CAPITAL FUNDING) DOLLARS WERE ALLOCATED IN 2011 AND 2019 FOR EFFICIENCY AND RENEWABLE PROJECTS
- THE LARGEST PROJECT THUS FAR IS A 600KW SOLAR ARRAY A WASTE TREATMENT FACILITY THAT WILL OFFSET HALF OF THE ENERGY USE AT THAT FACILITY
- \$15.8M MORE WAS ALLOCATED THROUGH SPLOST IN 2020 FOR ADDITIONAL RENEWABLE AND EFFICIENCY IMPROVEMENTS, WHICH WILL SAVE \$1.2M+ IN ANNUAL OPERATING COSTS.



# RESIDENTIAL OPPORTUNITY

- RESIDENTIAL DENSITY IN KEY AREAS SHORTENS COMMUTES, ENCOURAGES BUSINESS SUCCESS AND PRESERVES GREENSPACE.
- \$44.5M WAS APPROVED FOR AFFORDABLE AND MIXED INCOME HOUSING, INCLUDING A 1500 RESIDENT PROJECT THAT WILL SEE HIGH-EFFICIENCY DESIGN AND TRIPLE THE DENSITY OF THE AREA.



# TRANSPORTATION OPTIONS

- A VARIETY OF TRANSIT OPTIONS REDUCE RELIANCE ON SINGLE-RIDER MOTOR VEHICLES, CREATING ENVIRONMENTAL, HEALTH AND SOCIAL BENEFITS.
- TOGETHER, THE ACC AND UGA TRANSIT SYSTEMS REPRESENT THE 2<sup>ND</sup> HIGHEST RIDERSHIP IN GEORGIA
- A BIKE-PED MASTER PLAN IS SUPPORTED WITH MILES OF NEW TRAILS AND SIDEWALKS EACH YEAR, FUNDED WITH SPLOST AND TSPLOST.



# GREENSPACE AND FOREST LAND

- FORESTED AREAS AND NATURAL LAND ARE KEY TO AVOIDING HEAT ISLAND EFFECT, AESTHETIC BENEFITS AND CLEAN WATER
- 20% PERMANENTLY PROTECTED LAND, VIA PURCHASE AND REGULATION
- 60% TREE CANOPY COVER ACHIEVED



# WATER QUALITY AND QUANTITY

- IN 2020 ACC PURCHASED THE ROCK HILL QUARRY FOR WATER STORAGE OF 4.5B GALLONS (MORE THAN TRIPLING OUR CURRENT STORAGE).
- IN ADDITION TO THE ABILITY TO PUMP FRESH UNTREATED WATER TO THIS SITE DURING PEAK FLOW TIMES, IT WILL ALLOW RE-USE OF NON-POTABLE WATER FOR INDUSTRIAL USERS, EXTENDING SUPPLY CAPACITY

